

ELI
EZER

ERK-7800

Auto Refractor/Keratometer

B[™]H



 **ORDER
ONLINE**


GO GREEN

ELI
EZE[®]ER





Confidently measure the human eye with a sophisticated cutting edge technology designed to enhance your ability to diagnose ocular errors faster, easier, and accurately. ERK-7800 is brilliantly designed technology measures the eye with ultra precision and speed to provide reliable data as the starting point of your refraction and contact lens fitting. It's compact and modern design enables seamless operation and an enhanced patient comfort, making it the ideal choice in for any ophthalmic practice. Backed by an industry leading 2 Year Warranty!

Features

- Auto Refractor / Keratometer
- Enhanced Retro-illumination Imaging
- Accurate Measurement of Iris & Pupils Diameters
- Precise Temperature Sensor Compensation
- Enhanced Measuring Speed
- Comfortable Motorized Chin Rest
- Automatic High Speed Cutting Printer
- Simple One Touch Lock Knob
- 20 Touch & Tilt Color Monitor Display
- Sophisticated TFT LCD Graphic User Interface
- Easy Network Capability
- Backed by an Industry Leading 2 Years Warranty!



Auto Refractor / Keratometer

The ERK-7800 instantly reports the patient's assessed eye power by combining the Auto Refractor / Keratometer functions into this one sharp instrument, making measurement a snap. This determines the refractive and keratometric properties of the human eye to assist eye care professionals in the process of prescribing corrective eyeglasses and contact lenses.

Keratometry and Refractometry (RK Mode)



- 1.- Right eye
- 2.- Automatic or manual shooting
- 3.- Number of measurements
- 4.- Right eye measurement result
- 5.- Shooting times
- 6.- Measurement mode
- 7.- Patient number
- 8.- Step size
- 9.- Cylinder form

Enhanced Retro-illumination Imaging

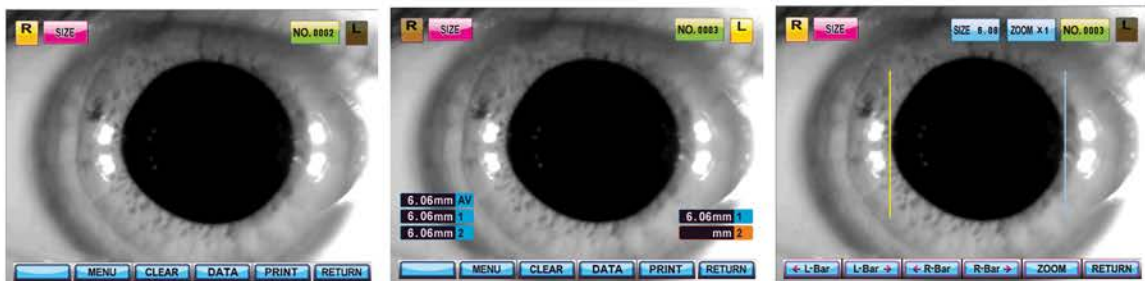


With the Enhanced Retro-illumination Imaging capability in the ERK-7800, you can treat and see abnormal crystalline lenses, cataracts, and scratches of corneas helping you to determine how healthy the patients eyes are with better clarity. This allows for observation of the eye condition of the cataract or contact lens surface. The system saves up to 2 images of each eye.

Accurate Measurement of Iris & Pupils Diameters

The corneal diameter and base curve of contact lenses can be measured with this one instrument. Therefore, measurements of eye and prescriptions for glasses and contact lenses can be made more efficiently.

Measuring Cornea Size (Size Mode)



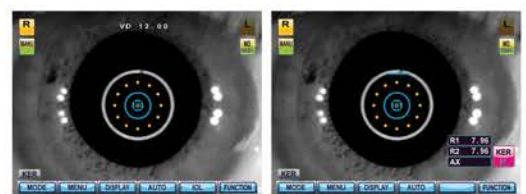
Wide Dioptric Measurement Range

Because the ERK-7800 covers a wide measurement range from -25D to +22D, even an examinee with strong myopia can be measured.

Enhanced Measuring Speed



REF MODE



KER MODE

Specially designed image chips have succeeded to make REF measuring speed faster reducing the overall examination time and increases throughput for complete examinations.



Comfortable Motorized Chin Rest

Simply by pressing up/down buttons, user can set the height of measuring point comfortably. With the cutting edge auto sensor mechanism, you can track down, measure and focus the eye with out ever making a mistake.

ERK-7800

Auto Refractor/Keratometer



Automatic Printer Paper Cut

The printer is designed to execute, print, & cut data automatically at high speed for immediate results.



Simple One Touch Lock Knob

With just the touch of a single button, the main body can easily be locked to its base.



20 Degrees Tilted LCD Monitor

The LCD Monitor tilts up to 20 degrees; a design made for comfort making. Excellent ergonomics makes it possible to operate the ERK-7800 while standing or sitting, for added convenience.



Sophisticated TFT LCD Graphic User Interface



Sharp images with easy to understand icons make this 6.4-inch color TFT LCD interface user-friendly and enjoyable to work with.

ERK-7800

Auto Refractor/Keratometer

Specifications

	<i>Measurement Mode</i>
R / K mode	Successive Refractometry & Keratometry
Ref mode	Refractometry
Ker mode	Keratometry
CLBC mode	Contact lens base curve measurement
<i>Refractometry</i>	
Vertex Distance (VD)	0, 10, 12, 13.5, 15 mm
SPH	-25.00 ~ +22.00D (0.12D / 0.25D)
CYL	0.00 ~ +/-10.00D
AX	1 ~ 180°
Cylinder form	-, +, +/-
Pupil Distance	10 ~ 85mm
Minimum Pupil Diameter	Φ 2.0
<i>Keratometry</i>	
Radius of Curvature	5.0 ~ 10.2mm
Corneal Power	33 ~ 67.50D
Corneal Astigmatism	00.0 ~ -15.00D (0.05 / 0.12 / 0.25D)
AXIS	1 ~ 180°
Corneal Diameter	2.0 ~ 12.0 mm
<i>Others</i>	
Printer	Thermal / Automatic cut printing
Power Saving	Nominate by 3,5,10 minutes
Display	6.4inch TFT LCD colored Monitor
Power Supply	AC 100 ~ 240V, 50 / 60Hz / 90W
Dimension / Weight	275(W) X 525(D) X 440(H), 20Kg
Chinrest Movement	Max., 65mm , Motorized operating
Data Out-put	RS-232 Interface, Video Output

